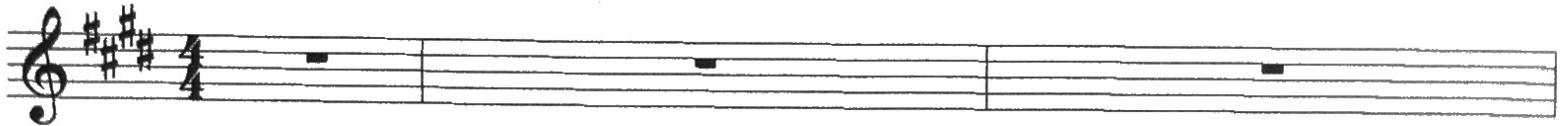


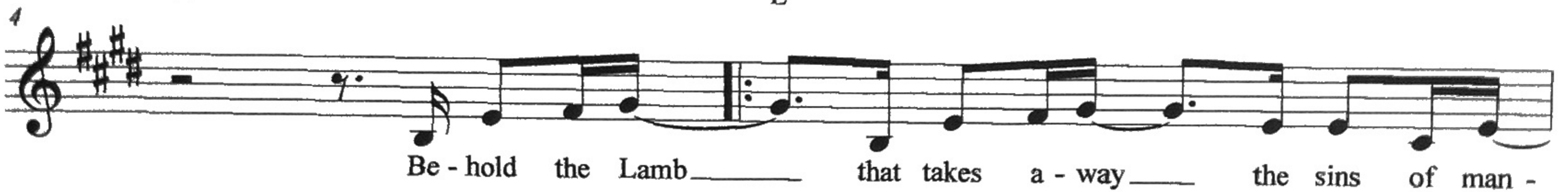
# Behold the Lamb

Andrew Russell

E A E



A E



Be - hold the Lamb \_\_\_\_\_ that takes a - way \_\_\_\_\_ the sins of man -

A



- y, \_\_\_\_\_ Be - hold the Lamb \_\_\_\_\_ that takes a - way \_\_\_\_\_ my \_\_\_\_\_ sin; \_\_\_\_\_ Be - hold the Lamb \_\_\_\_\_

C#m

A



\_\_\_\_\_ that takes a - way \_\_\_\_\_ the sins of man - y, \_\_\_\_\_ Be - hold the Lamb \_\_\_\_\_

E

A

C#m

E/B



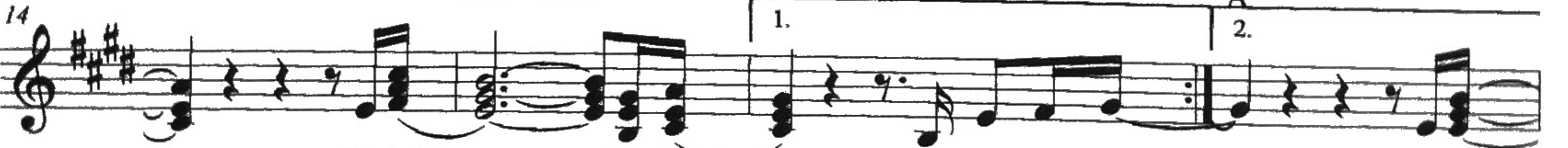
\_\_\_\_\_ that takes a - way \_\_\_\_\_ my \_\_\_\_\_ sin; \_\_\_\_\_ Be - hold \_\_\_\_\_ the Lamb, \_\_\_\_\_

A

C#m E/B

A

A



\_\_\_\_\_ Be - hold \_\_\_\_\_ the Lamb \_\_\_\_\_ Be - hold the Lamb \_\_\_\_\_ Be - hold \_\_\_\_\_

C#m E/B

A

C#m E/B

A(add9)



\_\_\_\_\_ the Lamb, \_\_\_\_\_ Be - hold \_\_\_\_\_ the Lamb \_\_\_\_\_ The Li -

F#m7

A(add9)



\_\_\_\_\_ on and \_\_\_\_\_ the Lamb, \_\_\_\_\_ the Li - on and \_\_\_\_\_ the Lamb, \_\_\_\_\_ the Li -



Behold the Lamb

24 E B  
 1.

on and the Lamb, the Li - on and the Lamb, the Li

26 B C#m E/B A(add9)  
 2. *repeat harmonies*

on and the Lamb, Be-hold the Lamb, Be-hold

C#m E/B A(add9) C#m E/B A(add9)

29

the Lamb Be-hold the Lamb, Be-hold

C#m E/B A(add9) E

33

the Lamb Be-hold the Lamb that takes a-way the sins of man -

A(add9) E A(add9)

36

- y, Be - hold the Lamb that takes a - way my sin;